

ProBase

System 800xA libraries for food and beverage operations



ABB

Application library

Complete object-oriented library

ProBase is a complete object-oriented library based on System 800xA for the food and beverage industry. Chosen by dairy and beverage producers all over Europe, ProBase features proven and efficient software modules and process objects built on more than 20 years' leadership in the food and beverage industry worldwide.



ies that boost *effici*

Consistent quality and rapid throughput

The combination of the System 800xA platform and ProBase industry library provides food and beverage producers with a unique capability to boost efficiency and flexibility while simultaneously securing product safety and quality. ProBase equips customers with the tools to achieve compliancy with numerous government regulations and guidelines like 21 CFR Part 11, and gives operators, engineers and maintenance staff real-time access to process data, asset information and other critical input. The result: consistent product quality, rapid product throughput, greater flexibility and fast response to market demands.

Speedy and efficient engineering

ProBase contains a complete and powerful library of ready-made software modules and process objects specifically designed for the food and beverage industry. They include components, devices and process equipment modules that can be used as they are or modified and configured to meet a customer-specific solution. Advanced product routing modules simplify engineering and help control each stage of the product flow from intake to finished product. The objects are well proven, quality assured and offer unique flexibility. ProBase's reuse capabilities ensure maximum engineering performance

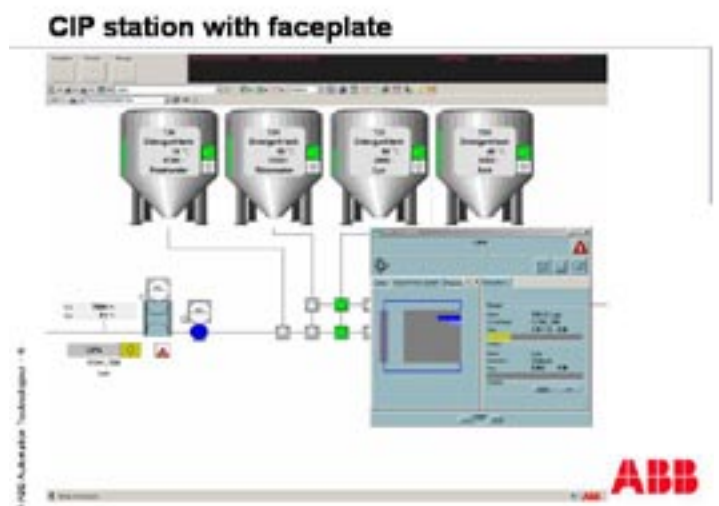
Intuitive operator interface

ProBase provides a streamlined environment for reliable control via a dynamic, easy-to-use operator interface that gives operators access to the whole plant and different layers of information. Product routing and valve matrix modules provide fast and easy access to the process as well as supervisory control of multiple and complex product transfers. All faceplates include interlock indications and online help texts that provide the operator with the relevant information to respond rapidly and make correct decisions to solve anomalies.



Recipe-based cleaning in place (CIP)

To reduce cleaning cycle times and optimize the use of detergent and water, ProBase features a complete solution for a CIP station. A comprehensive CIP recipe editor enables individual settings for each CIP object. On-line tools and graphical representation of circuit tuning and optimization ensure maximum performance.



Efficiency and flexibility



Preventive plant maintenance

ProBase enables customers to implement preventive maintenance programs to ensure that production remains at consistently high levels. Motor run times and valve strokes are monitored and recorded, and alarm limits assigned to each item of process equipment. ProBase is designed for optimal integration with System 800xA extended functionalities like manufacturing and batch management, device management and asset optimization. ProBase ensures that customers get the most value out of their existing plant assets.



Library structure



Track and trace

The ProBase control software provides information required to track all components and materials used throughout the entire production process. Data like product ID and volume, critical process parameters and product routing are recorded at each stage of production and help the plant comply with international standards like Regulation (EC) No 178/2002. The software includes settings to tune and record mix zones and optimize online product exchange. These improve productivity and ensure consistent quality of the product flow throughout the plant.

ProBase

Evolution through enhancement

ProBase is a scalable and modular library that enables users to tailor the size and functionality of the solution according to their needs. They can begin with a small library or with a solution for just one part of the process and then expand the scope as requirements evolve. System 800xA and ProBase are future-safe - customers can add new functionality or migrate to larger configurations without having to “rip and replace” their existing systems.

ProBase

- ✓ Based on System 800xA extended automation platform
- ✓ Proven application library for the food and beverage industry
- ✓ Standardized engineering solution with a complete library of ready-made objects
- ✓ Scalable to fit any needs
- ✓ Future-safe – can be upgraded or extended as needs evolve
- ✓ Easy to use and operate
- ✓ Easy to get started
- ✓ Recipe-based CIP editor for optimal use of detergents and excellent cleaning accuracy
- ✓ Solution for tracking and tracing materials used throughout the process
- ✓ Real-time data acquisition for preventive maintenance and asset optimization

ABB and Industrial IT

ABB is the world's leading supplier of automation technologies, offering a comprehensive, integrated suite of automation software and hardware products that improve enterprisewide operations. ABB's Industrial IT solutions address problems that automation customers face in today's e-business environment. In a suite of applications under the umbrella of Industrial IT, ABB provides a consistent infrastructure for data, operations, configuration, and maintenance across the enterprise.



Automation Technologies

Västerås, Sweden
Phone: +46 (0) 21 34 20 00
Fax: +46 (0) 21 13 78 45
www.abb.com/controlsystems
email: processautomation@se.abb.com

Automation Technologies

Wickliffe, Ohio, USA
Phone: +1 440 585 8500
Fax: +1 440 585 8756
www.abb.com/controlsystems
email: industrialitsolutions@us.abb.com

Automation Technologies

Mannheim, Germany
Phone: +49 (0) 1805 266776
Fax: +49 (0) 1805 776329
www.abb.de/controlsystems
email: marketing.control-products@de.abb.com

Copyright © 2002 by ABB. All rights reserved.

Specifications subject to change without notice. Pictures, schematics, and other graphics contained herein are published for illustration purposes only and do not represent product configurations or functionality. User documentation accompanying the product is the exclusive source for functionality descriptions. The Industrial IT wordmark, Aspect Objects, and all above-mentioned names in the form Industrial IT are registered or pending trademarks of ABB. All rights to other trademarks reside with their respective owners.